

Policing in Today's Communities: A Look at the Trends



Moral Hazard vs. Loss Prevention



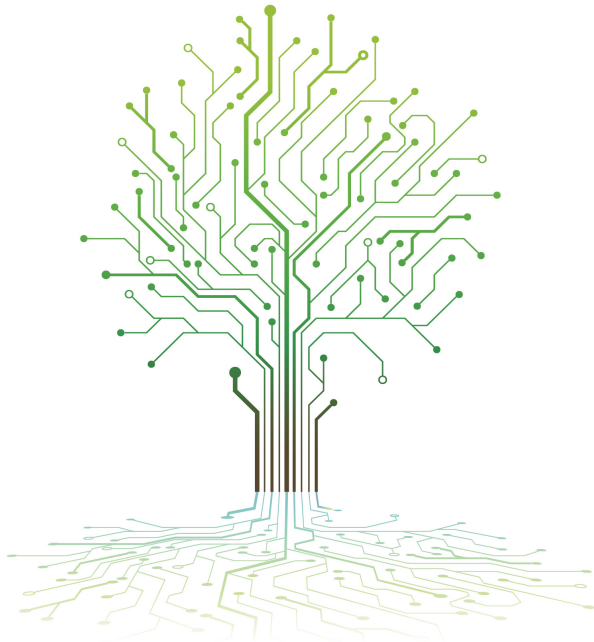
What % of Major Adverse Events in Policing are Predictable?

- A None
- B Some - (10% - 25%)
- C Half
- D Most - (65% - 85%)
- E All

If Officer level risk factors are predictable, does the same hold true for Agency level risk?

Benchmark's Founding Story

Government Roots.
Founded on Data Science & Tech.
Focused on Law Enforcement...



... and the Power of Collaboration.



Police Reform Trends Today

What will the next wave of reform look like?



Case Study: NJ Excellence In Policing

New Jersey Attorney General's Excellence in Policing Initiative

EXCELLENCE IN POLICING

[News](#) [Policy Documents](#) [Investigations](#) [Use of Force](#) [State Police Traffic Stop Data](#) [Major Discipline](#)

New Jersey is home to some of the finest law enforcement officers in the country. In fall 2019, Attorney General Gurbir Grewal issued a comprehensive package of policy initiatives designed to reinforce and clarify the Garden State's commitment to excellence in policing. These statewide reforms are intended to promote the culture of professionalism, accountability, and transparency that are hallmarks of New Jersey's best law enforcement agencies. Through Attorney General Grewal's "Excellence in Policing Initiative," the state is building a national model for strengthening trust between law enforcement officers and the communities they serve.

PROFESSIONALISM

- Improving law enforcement training
- Overhauling the state's Police Training Commission
- Promoting officer resiliency
- Identifying early warning signs for at-risk officers

ACCOUNTABILITY

- Ensuring independent investigations of officer-involved shootings
- Creating a more robust police disciplinary process
- Developing a proposal for police licensure
- Setting minimum standards for Civilian Review Boards

TRANSPARENCY

- Ensuring the public release of police use-of-force footage
- Creating systems for timely disclosure of impeachment material
- Collecting and publishing statewide data on police use-of-force

What % of Use of Force Incidents Lead to Injury?

- A None
- B Some - (10% - 25%)
- C Half
- D Most - (65% - 85%)
- E All

It depends!

Case Study Insights

- Smaller Agencies Have a Higher Rate of Injury With Use of Force than Large Agencies
- Agencies Vary Widely in Their Use of Force and Their Rates of Injuries Sustained
- Agencies of the Same Size Vary Widely in Their Median Incurred Worker's Compensation Losses
- Data Science + Subject Matter Expertise Enables Us to Discover *Observable* and *Actionable* Trends that Explains These Differences



Law Enforcement Risk is Predictable and Actionable

How Should Your Risk Pool Engage?

Key Takeaways:

- Risk Pools can play a significant role to improve Law Enforcement outcomes.
- A significant portion of Law Enforcement risk is addressable.
- Your claims data is enough to start.
- Risk insights will continually improve over time with systematic information capture and analysis.



Policing in Today's Communities: A Look at the Trends



John Rappaport
Professor of Law
jrappaport@uchicago.edu



Steve Brewer
Partner, Risk Solutions
steven.brewer@benchmarkanalytics.com
m. 414-308-4837